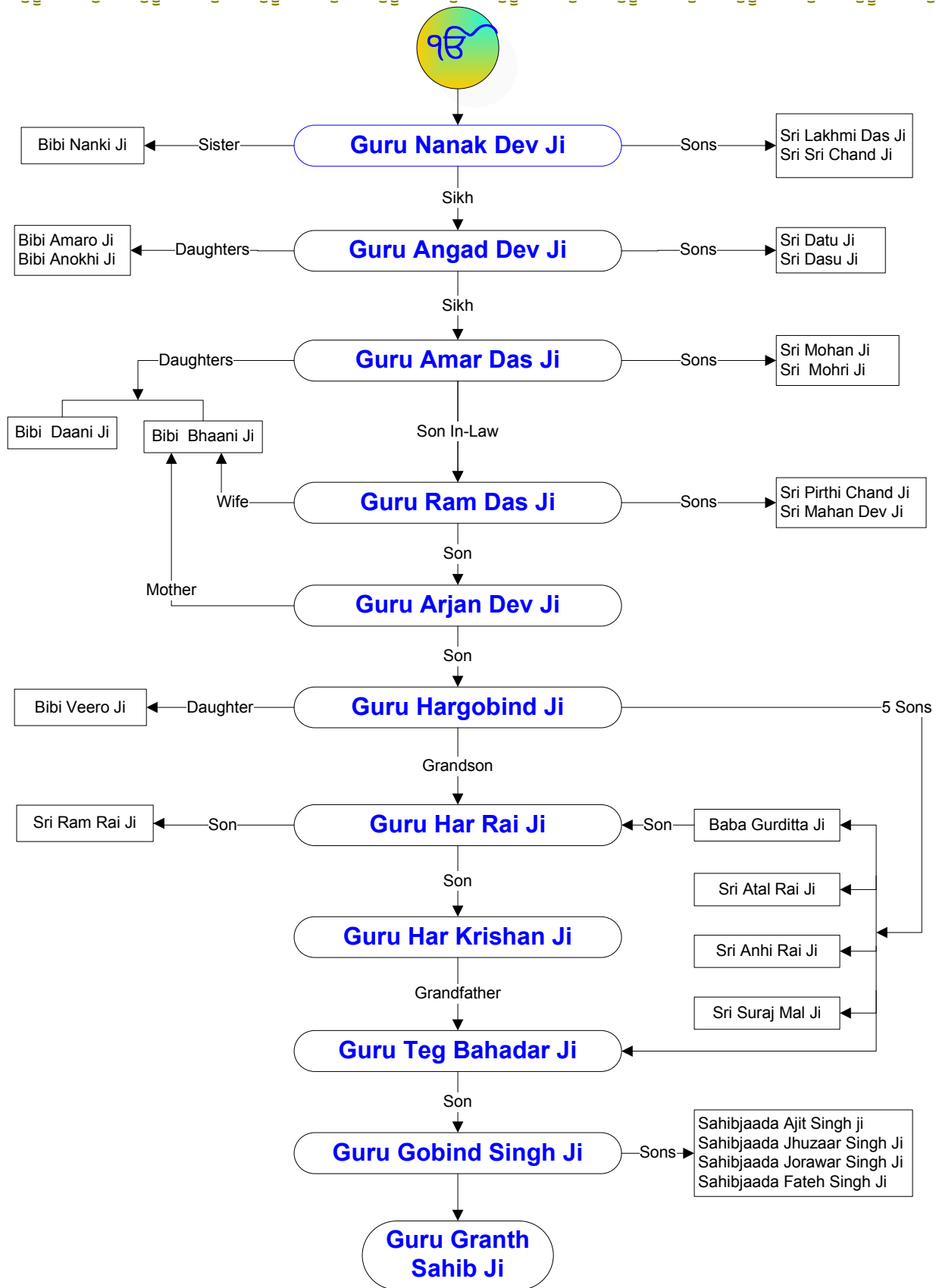


The diagram illustrates the lineage of the Sikh Gurus, starting from Guru Nanak Dev Ji and continuing through the subsequent Gurus, including their family members and the final Guru Granth Sahib Ji.

```

graph TD
    Khanda((ੴ)) --> GN[Guru Nanak Dev Ji]
    GN -- Sister --> BN[Bibi Nanki Ji]
    GN -- Sons --> SLD[Sri Lakhmi Das Ji  
Sri Sri Chand Ji]
    GN -- Sikh --> GA[Guru Angad Dev Ji]
    GA -- Daughters --> BAJ[Bibi Amaro Ji  
Bibi Anokhi Ji]
    GA -- Sons --> SDJ[Sri Datu Ji  
Sri Dasu Ji]
    GA -- Sikh --> AD[Guru Amar Das Ji]
    AD -- Daughters --> BD[Bibi Daani Ji  
Bibi Bhaani Ji]
    AD -- Sons --> SMJ[Sri Mohan Ji  
Sri Mohri Ji]
    AD -- Son In-Law --> GRD[Guru Ram Das Ji]
    GRD -- Wife --> BB[Bibi Bhaani Ji]
    GRD -- Sons --> SPCJ[Sri Pirthi Chand Ji  
Sri Mahan Dev Ji]
    GRD -- Son --> AD2[Guru Arjan Dev Ji]
    AD2 -- Mother --> BB
    AD2 -- Son --> GHJ[Guru Hargobind Ji]
    GHJ -- Daughter --> BV[Bibi Veero Ji]
    GHJ -- Grandson --> GHRJ[Guru Har Rai Ji]
    GHJ -- 5 Sons --> BGJ[Baba Gurditta Ji  
Sri Atal Rai Ji  
Sri Anhi Rai Ji  
Sri Suraj Mal Ji]
    GHRJ -- Son --> SRJ[Sri Ram Rai Ji]
    GHRJ -- Son --> GHKJ[Guru Har Krishan Ji]
    GHKJ -- Grandfather --> GTB[Guru Teg Bahadar Ji]
    GTB -- Son --> GGSJ[Guru Gobind Singh Ji]
    GGSJ -- Sons --> SAJ[Sahibjaada Ajit Singh ji  
Sahibjaada Jhuzaar Singh Ji  
Sahibjaada Jorawar Singh Ji  
Sahibjaada Fateh Singh Ji]
    GGSJ --> GSG[Guru Granth Sahib Ji]
  
```

[illegible]